

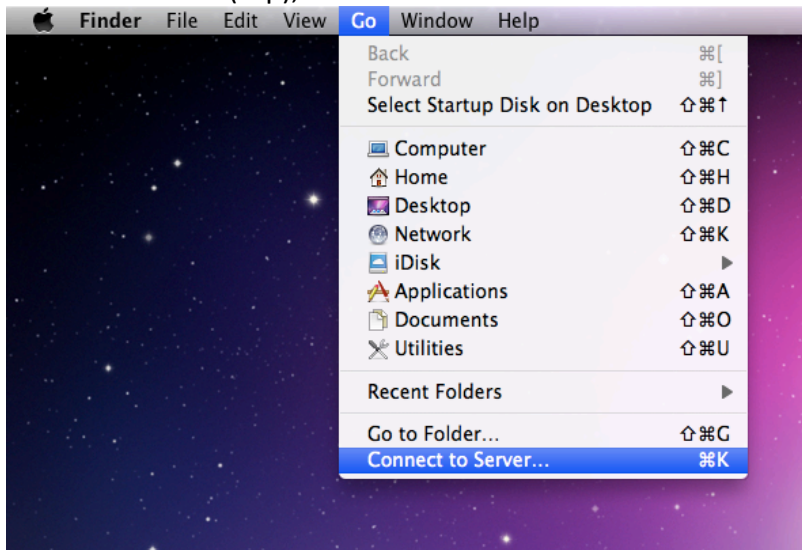
## How to map a shared drive in macOS

\*You need to be connected to Cisco AnyConnect VPN before attempting this

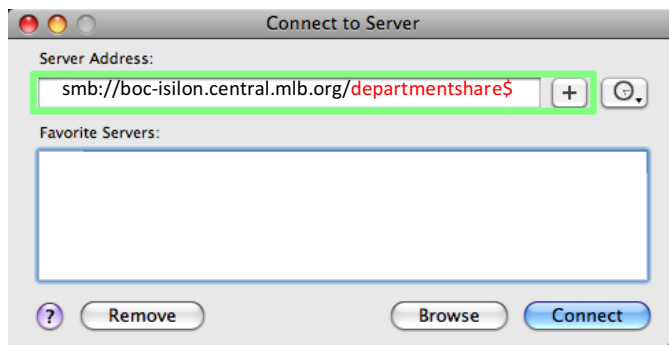
1. Open the “Finder” from the Dock



2. On the menu bar (top), click on “Go” and then click “Connect to Server...”



3. Enter the shared drive path and click the “+” button



Server Address: `smb://boc-isilon.central.mlb.org/departmentsharename`

Click “Connect”

You will see a finder window with the contents of the shared drive

Please contact the Service Desk if you need assistance finding your department shared name via [boc servicedesk@mlb.com](mailto:boc servicedesk@mlb.com)