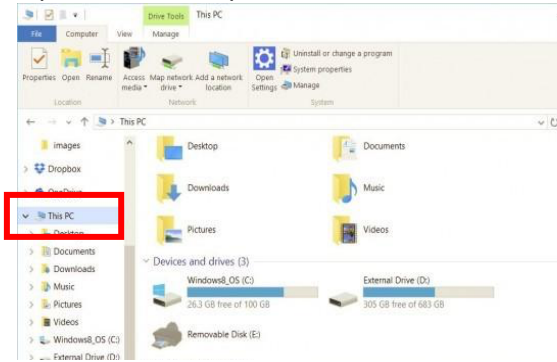


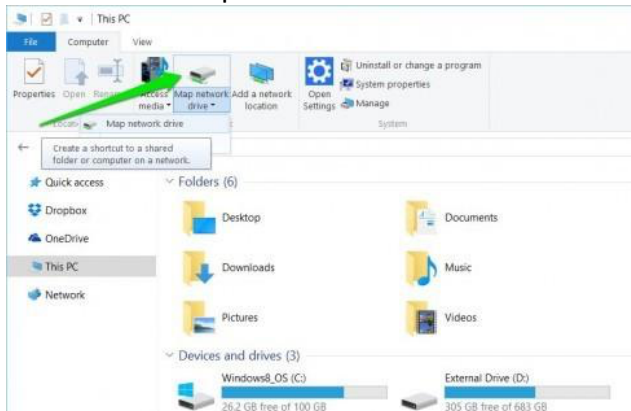
How to map a shared drive in Windows 7/10

*You need to be connected to Cisco AnyConnect VPN before attempting this
(The screenshots shown here are for Windows 10 but Windows 7 steps are very similar)

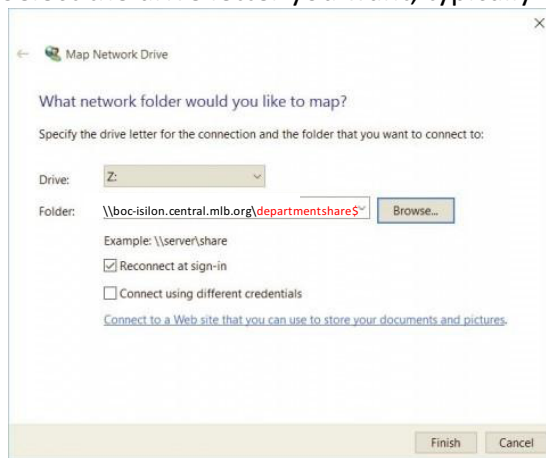
1. Open the File Explorer and Select “This PC”



2. Click on the “Map Network Drive Button”



3. Select the drive letter you want, typically G:



Folder: [\\boc-isilon.central.mlb.org\departmentsharename](https://boc-isilon.central.mlb.org/departmentsharename)

Click Finish

Please contact the Service Desk if you need assistance finding your department shared name via bocservicedesk@mlb.com